


Specification

JIVA XT-5315/5515

Model	
Processor	XT-5315: Intel G1820 / 2.7GHz / 2M Cache ; Intel G3320TE / 2.3GHz / 3M Cache ; Intel Core i3-4330TE / 2.4GHz / 4M Cache XT-5515: Intel Core i5-4570TE / 2.7GHz up to 3.3GHz / 4M Cache ; Intel Core i7-4330TE / 2.3GHz up to 3.3GHz / 8M Cache
System Memory	DDR3 1333 SO-DIMM x 2, max. 16GB, factory default 4GB (DDR3 1333/1600 for Core i3 / i5 / i7 CPU)
Storage Device	SATA storage x 2 ; factory default 320GB HDD x 1
Power Supply	12V DC power adaptor, 120W (Optional 80W when equipping with 2nd LCD display LM/TM-3014&LM/TM-3015)
OS Support	Windows 7 / POSReady 7 / Windows Embedded 8.1 Industry / Linux per request
Display	
LCD Display	15" TFT LCD, 1024 x 768 resolution
Touch Function	True-flat Projected Capacitive Touch supporting 10 pts multi-touch
Brightness adjustment	By digital push button
I/O & Expansion	
LAN Port	10 / 100 / 1000Mb x 2
Serial Port	6, DB9 x 2 + RJ45 x 2 on I/O plate, pin header x 2 from service window, 5V support on all COM ports, 12V support on COM 1 to COM 4
Parallel Port	1, via optional conversion cable
UPS Port	Yes
Standard USB Port	6
Powered USB Port	Optional 24V x 1 and 12V x 3 via GEN8E Base
Audio	Internal 2W speaker x 1 + Line-out
Display Port	VGA x 1, 12V support for Posiflex monitors; mini-DP x 1 on service window
Internal Expansion Slot	mini-PCIe slot x 1
CR Port	1, control 2 CR
Physical Dimension	
Dimension (W x D x H in mm)	372 x 320 x 252.7
Weight (N.W. in Kg)	5.86
Environment	
Operation Condition	0°C - 40°C, 20%RH - 90%RH (Equipped with HDD) ; 0°C - 50°C, 20%RH - 90%RH (Equipped with SSD)
Storage Condition	-20°C - 70°C, 10%RH - 90%RH
Options	
SSD	8GB minimum
SA-105	Side Attachment for XT Series with 3 track MSR
SA-205	Side Attachment for XT Series with iButton
SA-305	Side Attachment for XT Series with support for 3 track MSR, RFID and Finger Print Sensor
SA-405	Side Attachment for XT Series with support for 3 track MSR, 3G dongle and Finger Print Sensor
LM-3010	9.7" 1024 x 768 rear-mount 2nd display for JIVA XT Series (VGA interface)
LM-3210	Bezel type 9.7" 1024 x 768 rear-mount 2nd display for JIVA XT Series (VGA interface)
LM-3014	14" 1366 x 768 rear-mount wide screen 2nd display for JIVA XT Series (VGA interface)
LM-3015	15" 1024 x 768 rear-mount 2nd display for JIVA XT Series (VGA interface)
LM-3215	Bezel type 15" 1024 x 768 rear-mount 2nd display for JIVA XT Series (VGA interface)
TM-3010	9.7" 1024 x 768 rear-mount PCAP touch display for JIVA XT Series (VGA interface)
TM-3014	14" 1366 x 768 rear-mount PCAP touch display for JIVA XT Series (VGA interface)
TM-3015	15" 1024 x 768 rear-mount PCAP touch display for JIVA XT Series (VGA interface)
TM-3215	Bezel type 15" 1024 x 768 rear-mount Resistive touch display for JIVA XT Series (VGA interface)
LM-6607	7" 800 x 480 rear-mount 2nd display for XT series (USB interface)
PD-2608UE	2 x 20 VFD, rear-mount, USB with Virtual COM support
PD-350UE	2 x 20 LCD, rear-mount, USB with Virtual COM support
PD-6607	7" color LCD graphical line display, rear-mount (USB interface)
WIFI	Internal mini-PCIe WIFI module with PIFA Antenna
Certifications	

Design and Manufacturing in Taiwan by Posiflex Technology Inc.
The product information and specifications are subject to change without prior notice.

2014Q3

POSIFLEX

POSIFLEX TECHNOLOGY INC.
Authorised Australian & New Zealand Distributor:
Goodson Imports Pty Ltd
142 Wicks Road
Macquarie Park NSW 2113
Offices in all main States and New Zealand
Ph: 02-8875 4544 Fax 02-8875 4588
www.goodson.com.au

Authorized Distributor / Reseller

POSIFLEX

Flexible! Powerful! Elegant!



JIVA XT-5315/5515
High End Fan-free POS Terminal



In today's retail and hospitality market, POS terminal is no longer just a cold and hard business tool. It is a part of the store decoration, a part of the store image. Each curve and detail of the POS terminal should add something to the overall mood of the store, to lift the shopping experience of the customers.

With the true-flat PCAP touch screen supporting 10 points multi-touch, beautifully sculptured slim body, sexily curved base stand, Posiflex JIVA XT-5315/5515 looks right at any elegantly decorated store. And more than just good looks, Posiflex JIVA XT-5315 is powerful enough to handle any task imaginable that comes its way.



Looks

Slimmer and sexier than ever, XT Series is a sharp departure from the traditionally more conservative Posiflex terminal design. Every curves and details are carefully thought out to make XT Series one of the most visually desirable terminals in the market.

Flexibility

XT series comes with the selection of two foldable bases, the curvy slim GEN7E Base and the larger but practical GEN8E Base.

The new foldable base allows XT Series to be configured into different configurations. "Flat Folded Mode" to save the shipping package volume. "Low Profile Mode" to allow greater interaction between cashier and the customers; and the traditional "Full Extended Mode". All this can be achieved with a simple pull of the hidden lever. This one terminal/multi-configurations concept provides unmatched flexibility to store owners and system integrators alike.



Full Extended Mode



Low Profile Mode

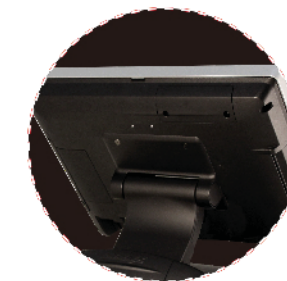


Flat Folded Mode



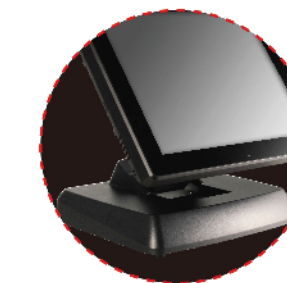
Performance

XT-5315/5515 offers a wide range of performance options from Intel Celeron to Intel Core i7 that is powerful enough to process anything throw at it without even breaking a sweat.



Fan-free Design

Fan-free architecture of XT-5315/5515 allows it to run on harsh environments, such as greasy kitchen, without ever worrying about the fan maintenance. It also allows the machine to run quietly, which is ideally suited for the high-end boutique stores or hospital environment.



GEN8E Base

Optional GEN8E Base that integrates internal power adaptor and Powered USB port into the base stand, which allows for clutter free counter.