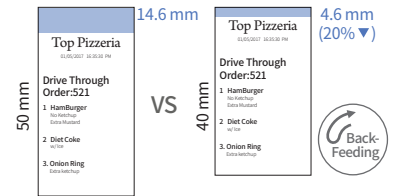
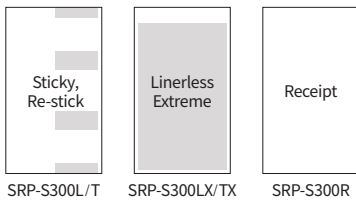
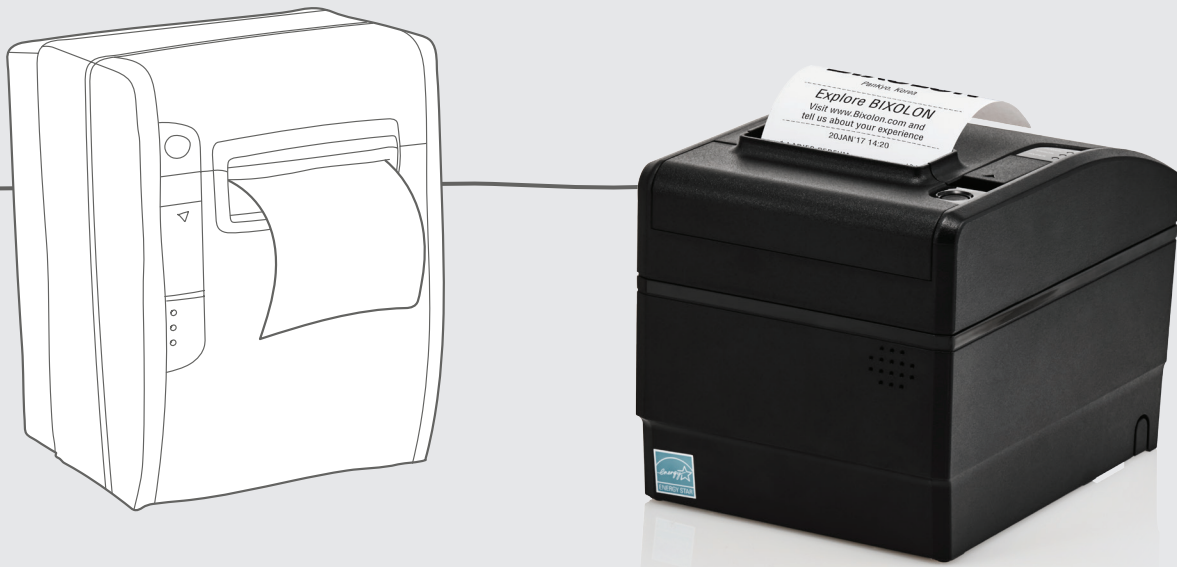


# SRP-S300

3 inch Linerless Label Printer



# Higher Performance and Lower TCO



### Multiple Media Choices

- Supports sticky, re-stick and linerless extreme label printing (Equipped with rubber platen rollers)
- Standard receipt printing
- 83 / 80 / 62 / 58 / 40 mm media width supported

### Exceptional Technology

- A water-resistant cover protects the main-board from water and moisture (IP21 certified)
- Optional taken sensor : Label will not continue to print until current label is removed to prevent jamming
- Built-in B-Melodist
  - Voice error message
  - One-time or continuous alarm for order notification

### Lower TCO

- World's first linerless label printer equipped with specialized back-feed technology
- Anti-jam technology is provided by special paper path design and automatic guillotine cutting system
- Paper saving mode reduces the length of a receipt up to 25%
- Easy to replace auto-cutter is included



# SRP-S300

## 3 inch Linerless Label Printer

### Specifications

#### Print Characteristics

**Print Method**

Direct Thermal

**Print Speed**

SRP-S300L/T, LX/TX: Up to 170 mm/sec  
SRP-S300R: Up to 300 mm/sec

**Print Resolution**

203 dpi

**Print Width**

Up to 80 / 72 / 60 / 48 / 32 mm

**Sensor**

Paper End, Black Mark, Cover Open,  
Paper Taken(Optional),  
Paper Near End(Receipt Only)

#### Media Characteristics

**Media Type**

SRP-S300L/T: Sticky, Re-stick  
SRP-S300LX/TX: Linerless Extreme  
SRP-S300R: Receipt

**Media Width**

83 / 80 / 62 / 58 / 40 mm

**Media Roll Diameter**

Up to 103 mm

**Media Thickness**

0.06 ~ 0.09 mm

**Supply Method**

Easy Paper Loading

#### Physical Characteristics

**Dimensions (WxLxD)**

156 x 210 x 160 mm  
(6.14 x 8.27 x 6.30 inch)

**Weight**

2.00 kg (4.40 lbs)

**Power**

Energy Star Certified,  
External Power Supply Housed Internally  
(Adaptor 24V/2.5A)

**Drawer Port**

2 Ports (Via y-type adaptor)

#### Performance Characteristics

**NV Image Memory**

256 Kbytes (Mono)

**Receive Buffer**

4 Kbytes

**User Define Buffer**

12 Kbytes

**Interface**

Standard: USB V2.0 FS  
Optional: USB V2.0 FS + Serial / Parallel /  
Ethernet / WLAN\* /  
Bluetooth V4.2 Classic / LE)\*\* /  
Powered USB

\* WLAN: 802.11a/b/g/n(2.4G+5G)

\*\* Bluetooth: Class 1, MFi certified

#### Environment Characteristics

**Temperature**

Operating: 0 ~ 40°C (32 ~ 104°F)  
Storage: -20 ~ 60°C (-4 ~ 140°F)

**Humidity**

Operating: 10 ~ 80% RH  
Storage: 10 ~ 90% RH

#### Reliability

**Thermal Print Head (TPH)**

SRP-S300L/T, LX/TX: 75 Km  
SRP-S300R: 150 Km

**Auto Cutter**

SRP-S300L: 1 Million Cuts  
SRP-S300R: 3 Million Cuts

#### Software

**Emulation**

BXL / POS

**Driver / Utility**

Windows Driver, OPOS Driver, JPOS Driver,  
Linux / Mac CUPS Driver,  
Virtual COM USB/Ethernet Driver, Utility Program

**SDK**

iOS SDK, Android SDK, Windows SDK, Linux SDK

#### Fonts / Graphics / Symbologies

**Character Size**

Font A: 12 x 24 Font B: 9 x 17 Font C: 9 x 24  
KOR, CHN, JPN: 24 x 24

**Characters Per Line**

Font A: 48 Font B, C: 64

**Character Sets**

Alphanumeric: 95  
Extended Graphics: 128 x 33 page  
International: 32

**Graphics**

Supporting User-Defined Fonts, Graphics,  
Formats, and Logos

**Barcode Symbologies**

1D: Coda Bar, Code 39, Code 93, Code 128,  
EAN-8, EAN-13, ITF, UPC-A, UPC-E  
2D: Data Matrix, PDF417, QR code



BR-SRP-S300-EN-SEP17-V2-NF

Copyright © BIXOLON Co., Ltd. All rights reserved. Features and specifications are subject to change without prior notice.

**BIXOLON®**

**BIXOLON Co.,Ltd.**  
+82 (0) 31 218 5500  
sales@bixolon.com

**BIXOLON America Inc.**  
+1 858 764 4580  
sales@bixolonusa.com

**BIXOLON Europe GmbH**  
+49 211 68 78 54 0  
sales@bixolon.de

www.Bixolon.com

