

# AerPPC

Power Efficient Intel Haswell Panel PC



**FEC**

# PP-9645

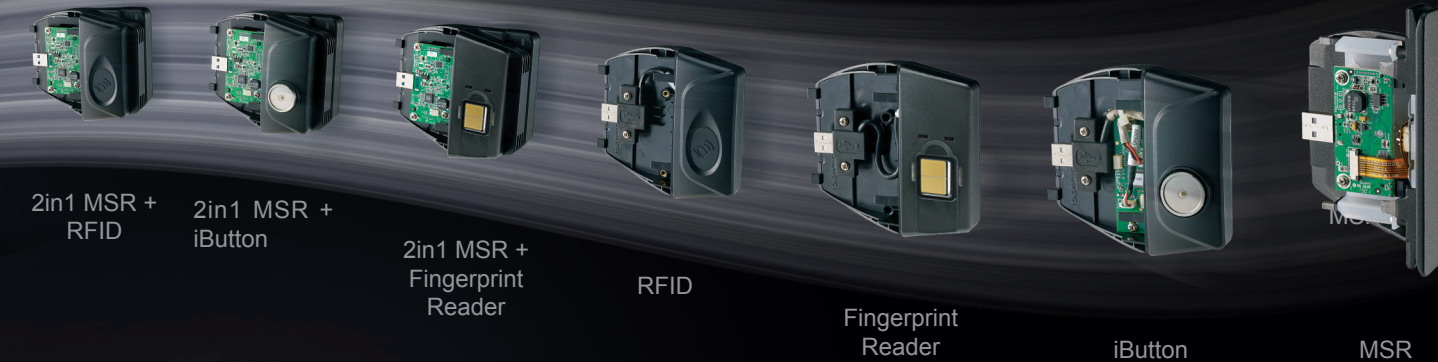
We aim to exceed your expectations by providing high quality, reliable products with state of the art designs.

Featuring brand new AerPPC drawer design, the main unit can be easily removed for maintenance while maintaining a sleek and stylish profile. The iconic AerPPC modular system provides outstanding flexibility, serviceability, efficiency and reliability to minimize your TCO (Total Cost of Ownership).

## Add-on Devices

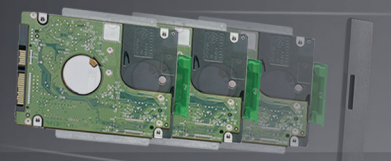
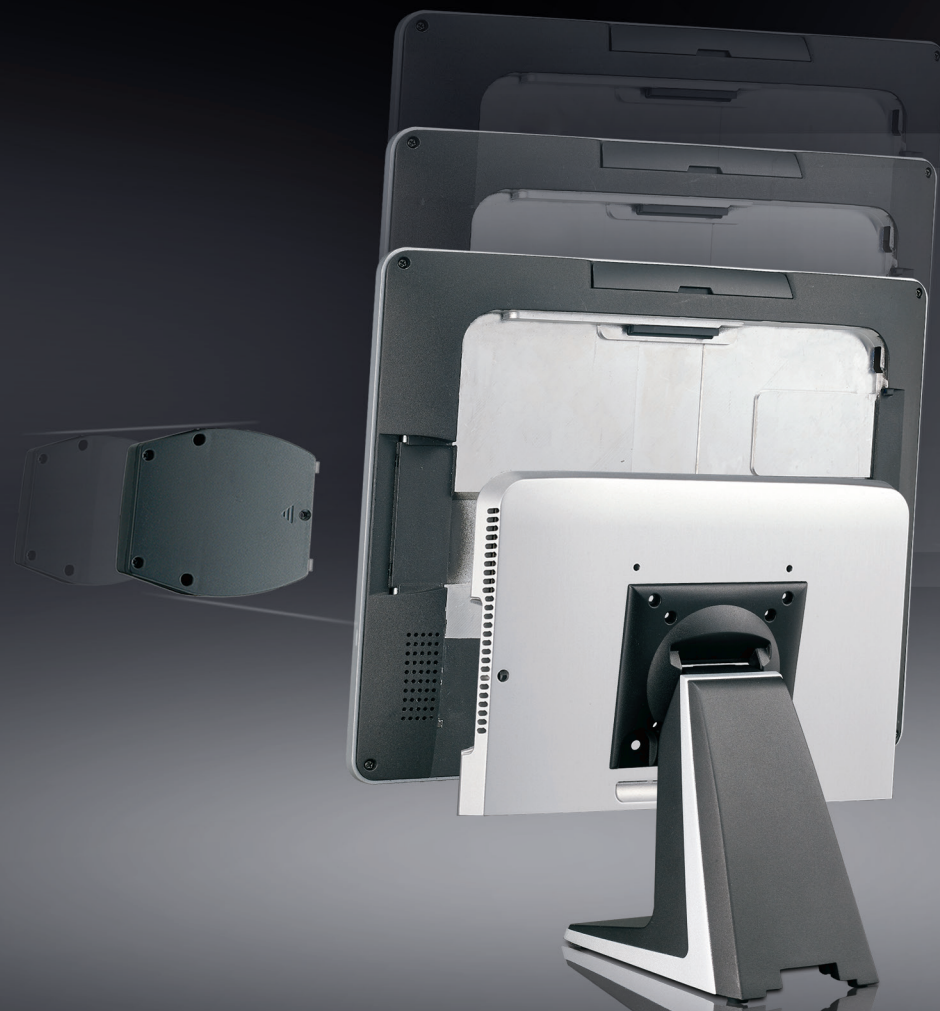
All AerPPC add-on devices use a USB interface for reliability, simple installation and maintenance.

USB I/O on the right side (standard) of the display



## Optional Display

## Features



Equipped with 2.5" SATA drive slot and onboard M.2 storage SSD (option)



Smart Fan detects CPU temperature and adjusts fan speed automatically



AerPPC is very versatile and offers many optional add-on devices



Integrated Pole Type Customer Display



Integrated Customer Display



Integrated Pole Type 15inch Display





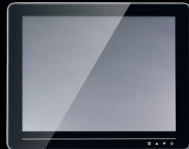
One touch access to remove the main unit.



Traditional bezel & true flat options



Improved power button & status LED design

Customer Display		2nd Display
		
VFD	LCM	
<ul style="list-style-type: none"> <li>• Various Customer Display Options</li> </ul>		<ul style="list-style-type: none"> <li>• Choose from 12", 13.3" or 15"</li> <li>• Optional Touch Support (all sizes)</li> <li>• Optional USB Hub and Audio Support (12" and 15" only)</li> </ul>



# Specifications



15" Resistive w/ Bezel



15" Resistive Bezel-Free



15" P-CAP Bezel-Free

Model	PP-9645A	PP-9645B	PP-9645C
Processor	Intel® Celeron G1820TE 2.20GHz Intel® Core i3-4330TE 2.40 GHz Intel® Core i5-4570TE 3.30 GHz		
System Memory	1 x 2GB Standard, Maximum 16GB (2 x 8GB 204-pin DDR3L)		
Power Supply	150W External Power Adaptor		
Storage Device	1 x 2.5" SATA HDD or SSD		
Second Storage	Optional M.2 Storage Device		
Construction	Aluminum Die-casting + Plastic (with Bezel)	Aluminum Die-casting + Plastic (Bezel-Free)	Aluminum Die-casting + Plastic (Bezel-Free)
Speaker	Internal Speaker 2W x 2		
Housing Color	Black	Black with Silver Trim	Black with Silver Trim
<b>Touch LCD Display</b>			
Brightness / Resolution	350 cd/m2 (LED) / 1024 X 768		
Touch	5-Wire Resistive Touch	5-Wire Resistive Touch	Projected Capacitive Touch
<b>I/O Ports</b>			
Serial Port	1 x External: COM1(RJ45) with RI / 5V / 12V Selectable		
USB Port	5 x External (Rear USB 2.0 x 2, USB 3.0 x 2, Side USB 2.0 x 1)		
Powered USB Port	1 x 24V		
Cash Drawer Port	1 x RJ11 (12V / 24V)		
LAN Port	1 x RJ45 Gigabit LAN		
Video Port	1 x VGA ; 1 x HDMI		
DC Power	1 x Input 12V DC / 1 x Output 12V DC Jack 2.5 mm		
Wifi	Optional 802.11 b / g / n		
<b>Optional I/O Board (Factory Install Only)</b>			
Type C	Serial Port: COM 2 & COM 3 (RJ45) RI / 5V / 12V Selectable; Powered USB Port: 1 x 12V		
Type G	Powered USB Port: 3 x 12V		
Type K	Powered USB Port: 2 x 12V; 1 x DB9 COM		
<b>Supported OS</b>			
Windows	Windows 7, Windows Embedded POSReady 7, Windows 8.1, Windows Embedded 8.1 Industry		
<b>Dimensions &amp; Weight</b>			
Product & Weight	Without Base: 364 mm (W) x 291 mm (H) x 53.9 mm (D), 5.2 Kg / With Base: 364 mm (W) x 329 mm (H) x 210 mm (D), 6.8 Kg		
Carton	548 mm (W) x 515 mm (H) x 352 mm (D)		
<b>Operation Conditions</b>			
Operating Temperature	0°C ~ 40°C (32°F ~ 104°F)		
Storage Temperature	-20°C ~ 60°C (-4°F ~ 130°F)		

\*Specifications are subject to change without notice.